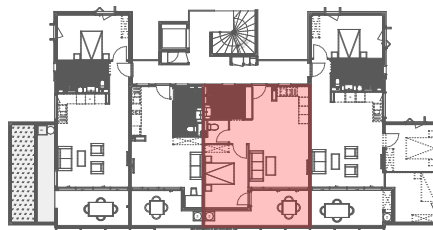


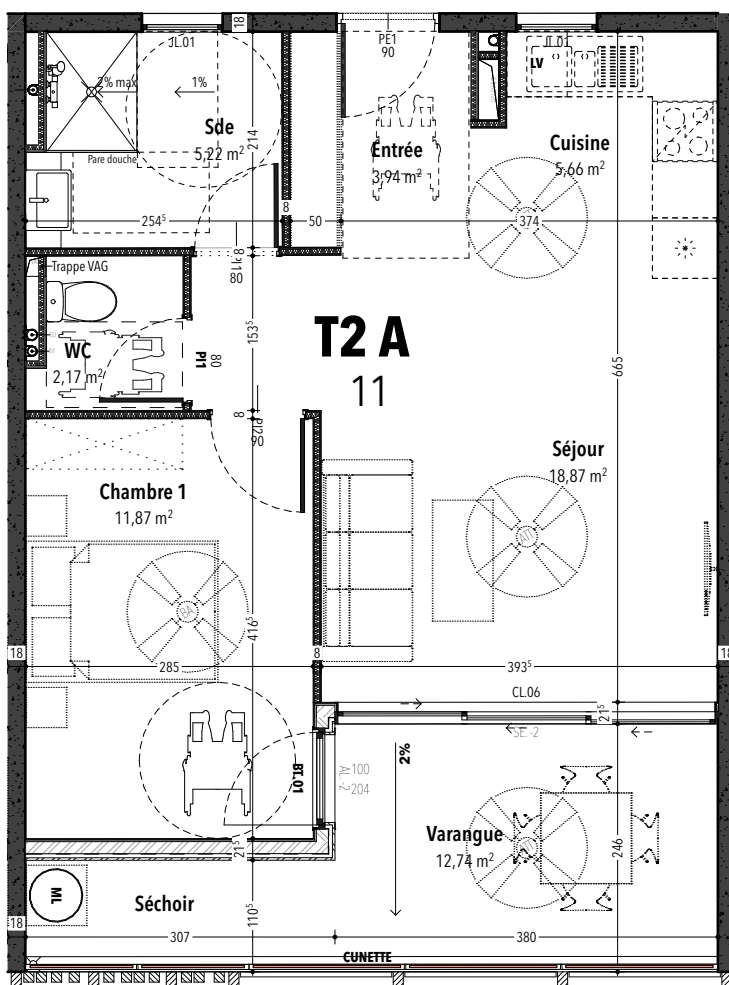
# OPÉRATION LES MADELEINES

Construction de 14 logements  
10 OCTOBRE 2023



PLAN DE REPERAGE

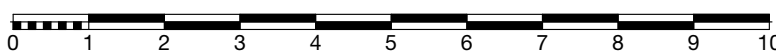
RDC	
R+1	
R+2	
R+3	●
COMBLES	
DUPLEX	



## PLAN DU LOGEMENT

### TABLEAU RÉCAPITULATIF DES SURFACES

ech: 1:75



TYPE: <b>Logement T2 A</b>		LOGEMENT N°: <b>11</b>																	
Surfaces habitables											Total surfaces habitables extérieures		Surfaces annexes						
Séjour	Chambre 1	Chambre 2	Chambre 3	Chambre 4	Cuisine	W.C	Sde	Séchoir	Dégt. + entrée	Divers (Mezzanine HT>1m80)	TOTAL	Varangue	TOTAL	Porche	Balcon	Var.>14m2	Divers (HT<1m80)	TOTAL	
18,87 m2	11,87 m2	/	/	/	5,66 m2	2,17 m2	5,22 m2	/	3,94 m2	/	47,73 m2	12,74 m2	12,74 m2	/	/	/	/	/	