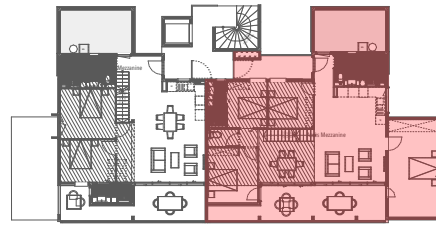


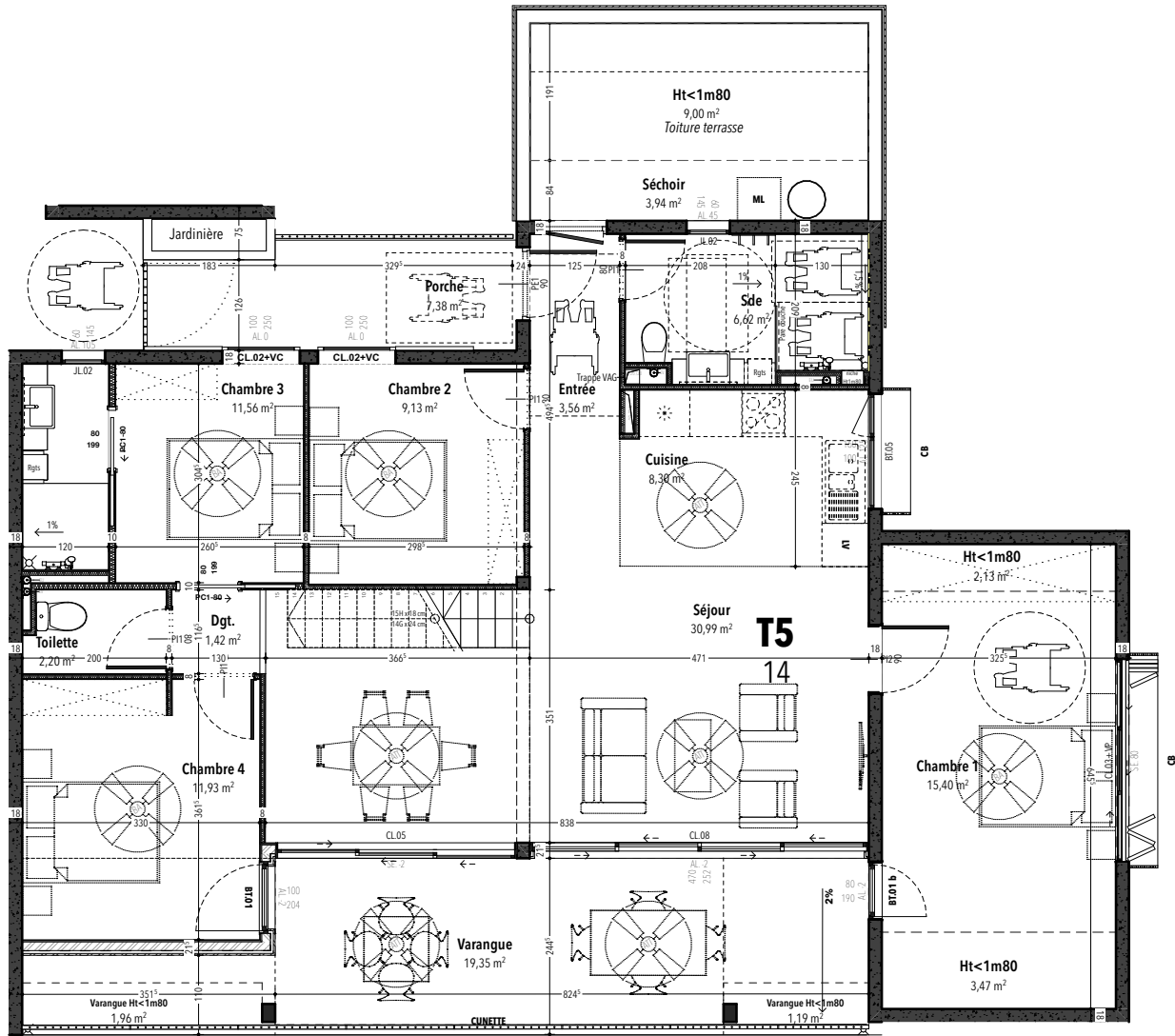
OPÉRATION LES MADELEINES

Construction de 14 logements
10 OCTOBRE 2023



PLAN DE REPERAGE

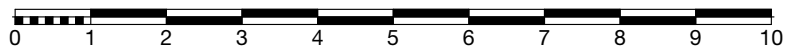
RDC	
R+1	
R+2	
R+3	
COMBLES	●
DUPLEX	



COMBLES

PLAN DU LOGEMENT TABLEAU RÉCAPITULATIF DES SURFACES

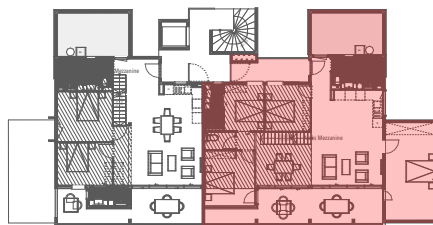
ech: 1:100



TYPE: Logement T5 duplex		LOGEMENT N°: 14																		
Surfaces habitables											Total surfaces habitables extérieures		Surfaces annexes							
Séjour	Chambre 1	Chambre 2	Chambre 3	Chambre 4	Cuisine	W.C	Sde	Séchoir	Dégt. + entrée	Divers (Mezzanine HT>1m80)	TOTAL	Varangue	TOTAL	Porche	Balcon	Var.>14m2	Divers (Ht<1m80)	TOTAL		
30,99 m2	15,40 m2	9,13 m2	11,56 m2	11,93 m2	8,30 m2	2,20 m2	6,62 m2	3,94 m2	4,98 m2	11,31 m2	116,36 m2	14,00 m2	14,00 m2	7,38 m2	/	5,35 m2	49,72 m2	62,45 m2		

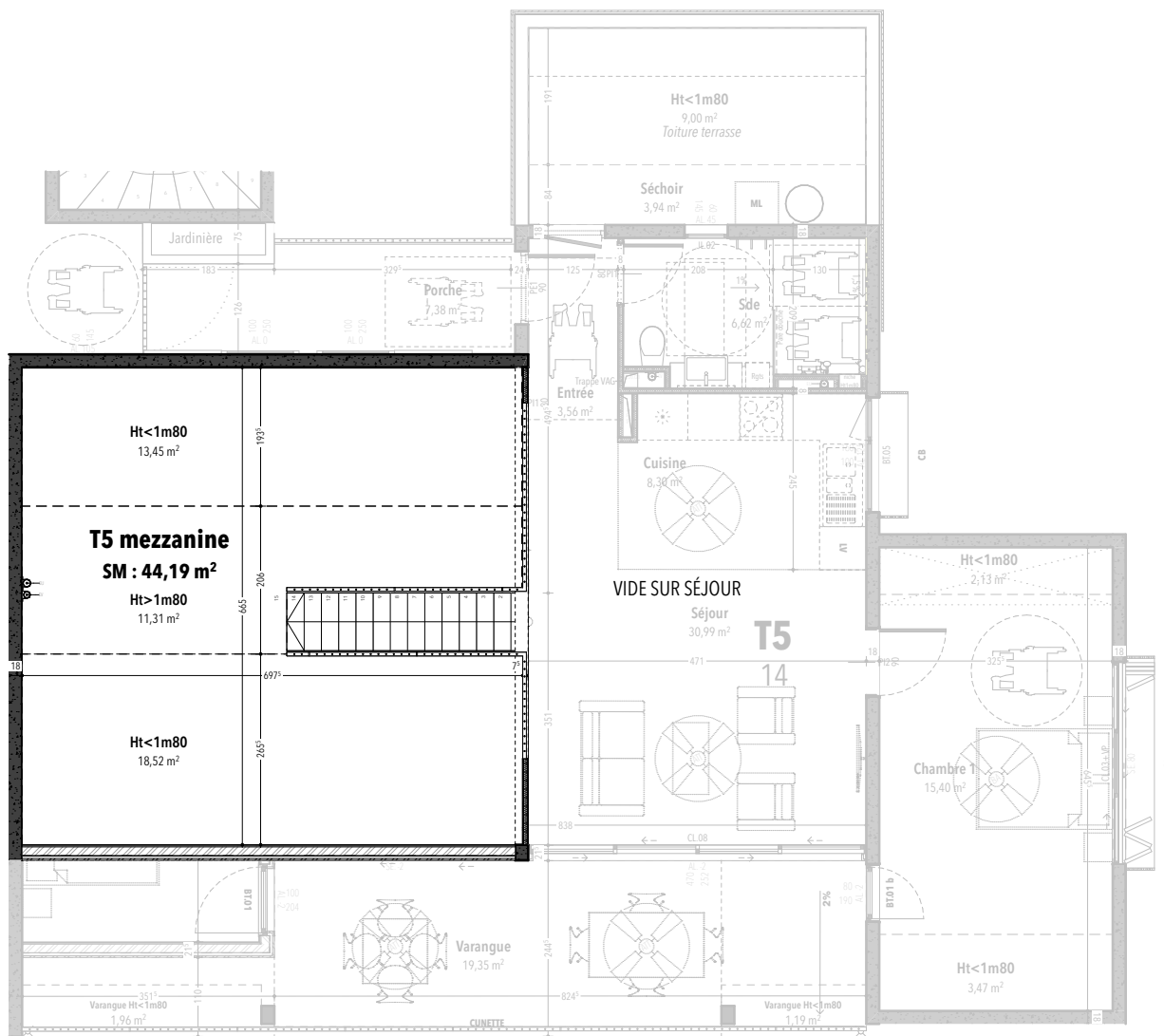
OPÉRATION LES MADELEINES

Construction de 14 logements
10 OCTOBRE 2023



PLAN DE REPERAGE

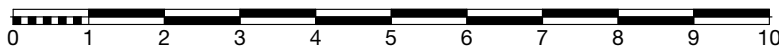
RDC	
R+1	
R+2	
R+3	
COMBLES	
DUPLEX	●



DUPLEX COMBLES

PLAN DU LOGEMENT
TABLEAU RÉCAPITULATIF DES SURFACES

ech: 1:100



TYPE: Logement T5 duplex	LOGEMENT N°: 14
---------------------------------	------------------------