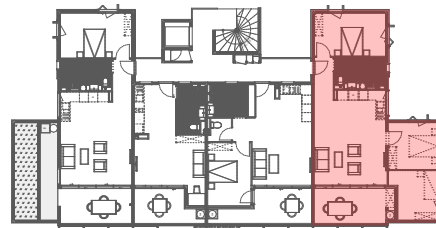
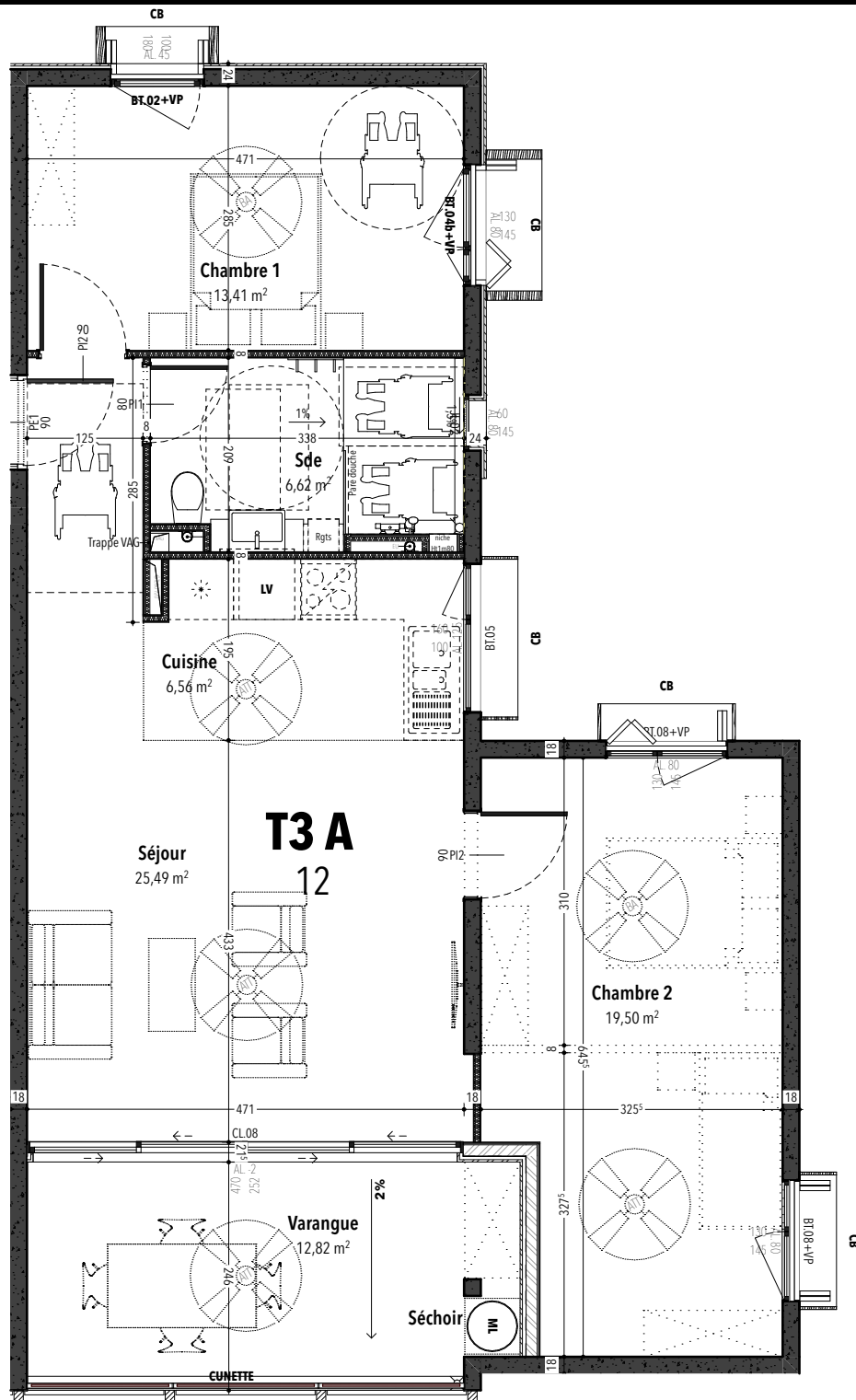


# OPÉRATION LES MADELEINES

Construction de 14 logements  
10 OCTOBRE 2023



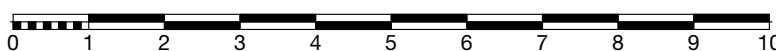
RDC	
R+1	
R+2	
R+3	●
COMBLES	
DUPLEX	



PLAN DU LOGEMENT

TABLEAU RÉCAPITULATIF DES SURFACES

ech: 1:75



TYPE: <b>Logement T3 A</b>		LOGEMENT N°: <b>12</b>																	
Surfaces habitables											Total surfaces habitables extérieures		Surfaces annexes						
Séjour	Chambre 1	Chambre 2	Chambre 3	Chambre 4	Cuisine	W.C	Sde	Séchoir	Dégt. + entrée	Divers (Mezzanine HT>1m80)	TOTAL	Varangue	TOTAL	Porche	Balcon	Var.>14m²	Divers (HT<1m80)	TOTAL	
25,49 m²	13,41 m²	19,50 m²	/	/	6,56 m²	/	6,62 m²	/	/	/	<b>71,58 m²</b>	12,82 m²	<b>12,82 m²</b>	/	/	/	/	/	