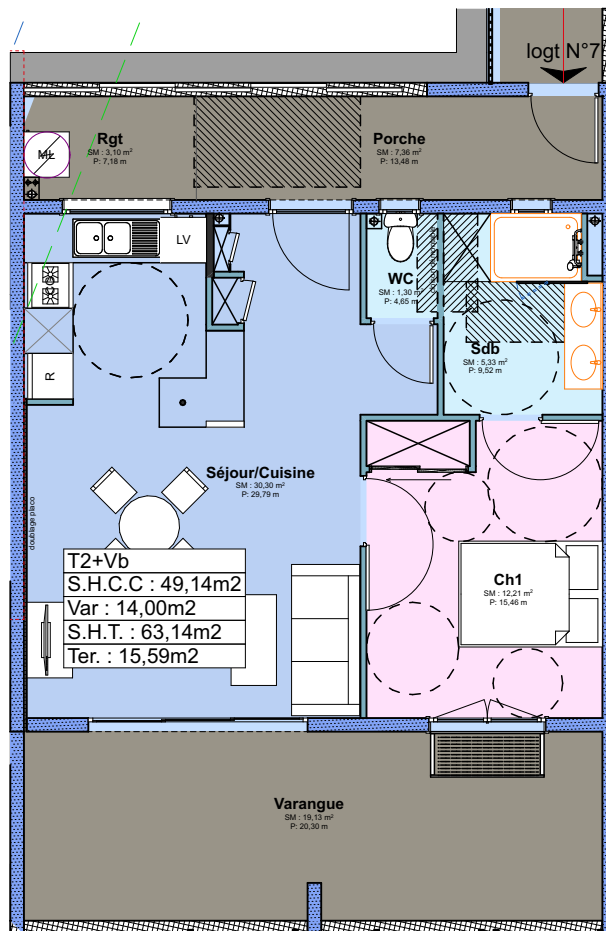
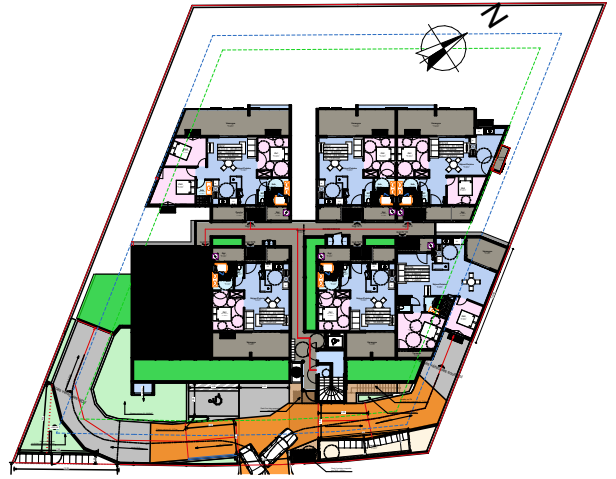


OPERATION "Résidence GISELE"
28 LOGEMENTS
Commune de Saint-Paul

SCCV NA 07
 5 Rue du Pressoir
 Le-Piton-Saint-Leu
 97424 SAINT-LEU

MTA & C ARCHITECTES
 52b Avenue Leconte de Lisle
 97490 SAINT-LEU-DE
 Tél : 0262 4 25 95
 Email : secrelariat.mta@gmail.com



Date: 28/10/2022

Etabli par : SAS MTA&C

Echelle: 1:100

| Surfaces Habitables | | | | | | | | | | | | Surfaces Annexes | | | |
|---------------------------|---------|---------------------|--------------------|------|------|---------------------|---------|--------------------|---|--------|------|---------------------|---------------------|---------------------|--|
| Séjour | Cuisine | Ch.1 | Ch.2 | Ch.3 | Ch.4 | Varangue | Séchoir | S.d.B | W.C | Entrée | Degt | Balcon | Terrasse | Jardin privatif | |
| 30,30m ² | | 12,21m ² | | | | 14,00m ² | | 5,33m ² | 1,30m ² | | | | 15,59m ² | | |
| Total Surfaces Habitables | | | | | | | | | | | | 63,14m ² | Total SA | 15,59m ² | |
| Type T2+Vb | | | Niveau | | | RDC | | | OPERATION "LES FLAMBOYANTS" 28 LOGEMENTS | | | | | | |
| Lgt N° 07 | | | Rue Hubert Delisle | | | | | | | | | | | | |