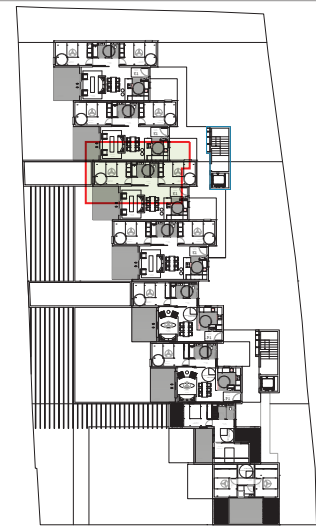


PLAN R+4



T3A	
	Surfaces m²
Entrée + Dgt	3,68
Salon	25,46
Cuisine	7,73
Chambre 1	13,72
Chambre 2	13,58
Dgt	3,98
Wc	1,40
Salle de Bain	4,12

Surf. Habitable	73,67
Varangue	13,22
SHAB + V	86,89
Surface totale	86,89

