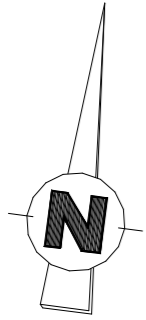


Rue Antoine Roussin

ACCES VEHICULE



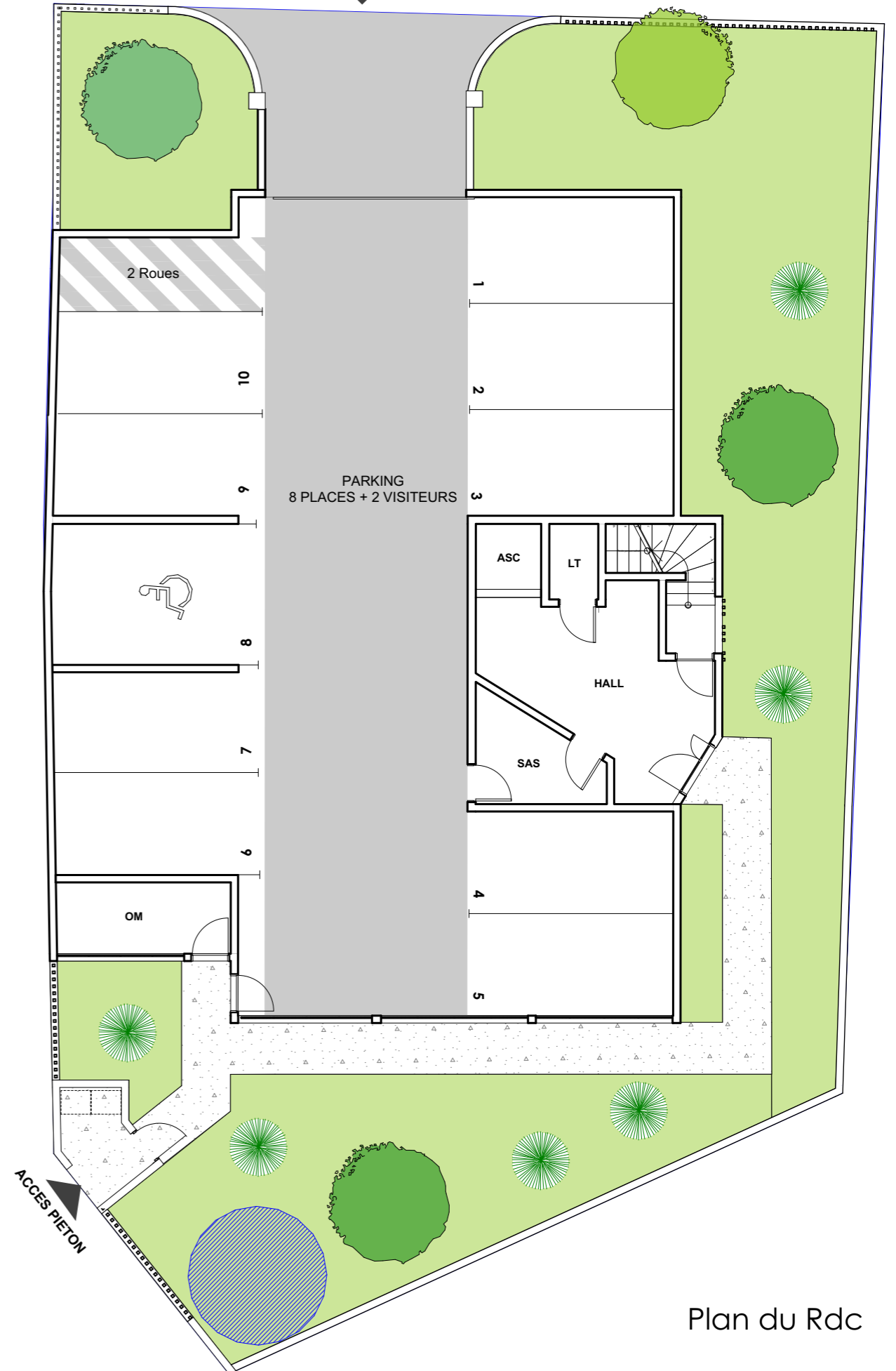
Rue Antoine Roussin

ACCES PIETON




Plan de masse

ACCES VEHICULE



Plan du Rdc

STAR INGENIERIE		 henry LUCAS architecte dplg
<b>Résidence de 8 Logements</b> N°1 ter rue Antoine Roussin 97460 Saint-Paul		
<b>PLAN DE MASSE - RDC</b>		Indice n°: 0 Date indice : 24/11/2020